



Stanislaus  
Community  
Foundation



# A FORCE FOR GOOD

- Responding Today
- Rebuilding Tomorrow

2020 ANNUAL  
REPORT

Dear Friends,

2020 was a year like no other. The pandemic and subsequent economic shutdown shed light on the longstanding inequities in our region. These powerful but painful lessons, especially those that highlighted racial disparities, led Stanislaus Community Foundation to deepen our commitment and accelerate our work to alleviate poverty in the region, both with our immediate response and with long-range leadership efforts.

Our 2020 annual report highlights how Stanislaus Community Foundation navigated the multiple crises that rocked our region. We tripled our grantmaking and used nimble donor funds to develop responsive new programs for local nonprofits and residents, that were later scaled with additional funding by local government. In addition to increasing our giving, Stanislaus Community Foundation hosted a series of nonprofit webinars, culminating in *The State of Stanislaus County's Nonprofit Sector Report*, with guidance for donors, as well as private and public funders.

Stanislaus Community Foundation integrated the lessons from 2020 into our plans for 2021, which include an expansion of our leadership work into the areas of economic opportunity and civic engagement. Stanislaus Community Foundation commits to rebuilding our region along the following strategic pillars:

- **EDUCATION** - Bolster achievement along critical points on the education and workforce continuum, through the Stanislaus Cradle to Career Partnership.
- **ECONOMIC OPPORTUNITY** - Advance economic opportunity by investing in historically disinvested neighborhoods and building new entrepreneurial programs, such as social enterprises.
- **CIVIC ENGAGEMENT** - Restore our civic faith through Civic Saturday events and support new leadership through the NextGen on Board fellowship program for young leaders of color.

While this has been an incredibly challenging time, the pandemic highlighted our interdependence and shared humanity. We pledge and renew our work with donors, partners, and residents to create a more vibrant community for all who call Stanislaus home.

In the spirit of generosity,



**Bill Jackson**  
Chairman, Board of Directors



**Marian Kaanon**  
President & CEO



**a year  
like no  
other**

## STANISLAUS COMMUNITY FOUNDATION BOARD OF DIRECTORS

### BILL JACKSON CHAIR

CEO/President, VA Rodden Co.

### DAVE OLSON VICE CHAIR

President, DJLJ LLC

### MELANIE CHIESA IMMEDIATE PAST CHAIR

Partner, Monte Vista Optometry

### JEFF COLEMAN TREASURER

Principal, Grimbleby Coleman, CPAs

### CHRIS TYLER SECRETARY

Investment Manager,  
Terravest Capital Partners LP

### JUDY SLY HERRERO MEMBER AT LARGE

Retired, Modesto Bee Editor

### JOE DURAN

CFO, City Ministry Network

### BRITTA FOSTER

Partner, TIV Agency

### LOUIS "LOU" FRIEDMAN

Attorney, Gianelli Nielsen

### MATT FRIEDRICH

Attorney, E. & J. Gallo Winery

### JOHN LAZAR

Broker-Associate,  
Century 21 M&M Associates

### TONY JORDAN

Executive Director for Stanislaus  
County Office of Education's  
Child & Family Services Division

### DILLON OLVERA

President & CEO, Beard Land  
and Investment Co.

### SEANA DAY

Partner, Better Food Ventures/  
The Mixing Bowl

### MARIA AREVALO

Attorney, Retired

### CHRIS COURTNEY

President and CEO,  
Oak Valley Community Bank

# Meeting the Challenges of 2020

## *Rapid Response Efforts*

COVID-19 and the corresponding restrictions on public gatherings impacted nonprofit service delivery and fundraising efforts. Stanislaus Community Foundation worked with government, nonprofit, and community partners to coordinate response efforts and leverage funding. We **rapidly surveyed local nonprofits** to assess their needs and accurately communicated these needs to donors and partners. We collaborated on an **information campaign** with **Stanislaus County Office of Emergency Services** and local faith leaders through [loveourneighbors.org](http://loveourneighbors.org).

As nonprofits were forced to transition to new service delivery and fundraising models, Stanislaus Community Foundation hosted a **series of webinars** aimed at stabilizing nonprofit capacity. In partnership with the **United Way of Stanislaus County**, we funded 14 local nonprofits to receive **financial counseling**.

## *Flexible Funding for Scalable Solutions*

As government funding and other interventions rolled out, Stanislaus Community Foundation identified gaps in resources for community members and organizations and launched the **Resilient Stanislaus Fund**, which awarded **more than \$300,000 in grants** to support local businesses, college students experiencing financial hardship, and nonprofit organizations focused on jobs and the economy, mental health, arts & culture, and youth. We provided **Downtown Modesto Partnership** with an initial investment of **\$125,000** to launch the **RAD Card Program**, an innovative matching gift card program to support small businesses throughout the county.

**The Stanislaus County Board of Supervisors** scaled the **Resilient Stanislaus Fund** grants program and worked with Stanislaus Community Foundation to provide an additional **\$2 million** in CARES Act funding to local nonprofits. The Stanislaus County Board of Supervisors also invested an additional **\$2 million** in the **RAD Card Program**.

## *Philanthropic Guidance and Growth*

Stanislaus Community Foundation published **The State of Stanislaus County's Nonprofit Sector Report** in the fall of 2020 to share information about the impact of COVID-19 on Stanislaus nonprofits and to provide guidance to funders on how they can best provide support. We also formed a **funder circle** with other local funders—including the **United Way of Stanislaus County, Stanislaus County**, and the **City of Modesto**—to coordinate response efforts and leverage investments for greater impact.

None of this work would have been possible without the generous support of our donors, who in 2020 provided a **record-breaking \$6 million in grants and scholarships** to students and nonprofits. We are fortunate to be a part of such a generous community.



**\$6 million  
in grants and  
scholarships**

# Our Work in 2021

*Stanislaus Community Foundation approaches 2021 with a renewed passion for building up our community with philanthropic investments and clear-sighted, inclusive leadership. We believe we can advance our vision of Stanislaus as a “community of choice” even in tough times. Given all that we have witnessed in 2020, we will expand our leadership work beyond education to include new initiatives in economic opportunity and civic engagement.*

## Educational Excellence

### **The Stanislaus Cradle to Career Partnership**

The **Stanislaus Cradle to Career Partnership** is grounded in the belief that no single individual, program, organization, or institution can single-handedly solve the complex education and workforce readiness challenges facing our community. Improving outcomes at scale requires innovation and sustained collaboration across organizations and sectors to achieve significant and lasting impact.

Stanislaus Community Foundation launched the **C2C Fund** in 2020, which pools funds from multiple donors and partners and invests these dollars into proposals that address the five outcome areas of **kinder readiness, early literacy, math proficiency, college attainment, and career readiness**. The primary goal for the C2C Fund is to advance strategies that get better results faster and to bolster larger partnership initiatives relating to racial equity, mental health, and community power-building. Stanislaus Community Foundation will invest **over \$600,000** in 2021 towards this collective effort, which will include grants specifically for **youth & parent empowerment, dual enrollment expansion, and action team innovations**.

### **Scholarships for Stanislaus Students**

Last year, thanks to the support of our generous donors, we supported **200 Stanislaus County** students with **over \$400,000** in scholarships. **Over 80%** of our needs-based scholarships were awarded to **first-generation college students**, and a **new online outreach and awards process** improved access and communications with students during an unprecedented time. In 2021, we will continue to work to make our scholarships process equitable and accessible to all Stanislaus County students.

## Economic Opportunity

In late 2019 and through 2020, Stanislaus Community Foundation posed the following question to local partners: “How can more Stanislaus residents move from the margins of our economy to experience greater financial prosperity?” Our exploration uncovered that Stanislaus County was missing important assets to support economic mobility, including a community development corporation and social enterprises. In 2021, we will invest in creating this vital infrastructure in Stanislaus.



**Social enterprises** are organizations that apply business strategies to provide a positive social benefit. With support from the **Porges**

**Family Foundation**, Stanislaus Community Foundation is launching **Profit with Purpose**, a program that provides local nonprofits and mission-driven businesses with a step-by-step structure to launch new business ideas that earn revenue and sustain mission over time.

### **Community Development Corporations (CDCs)**

are nonprofits that support and revitalize underserved communities by providing services such as education, job training, and affordable housing. Stanislaus Community Foundation supported City Ministry Network’s initial efforts to incubate and launch a CDC focused on providing pathways to home ownership and small business services.

Stanislaus Community Foundation will continue to support economic recovery efforts as we emerge from the COVID-19 pandemic. **Attracting investment** to our region is key to our recovery and will require coordination and collaboration between county and regional partners. We will help our local partners prepare their plans for investment, participate in county-wide economic recovery efforts, and support large-scale economic recovery work within the North San Joaquin Valley.

# OUR WORK IN 2021



## *Civic Engagement & Community Capacity Building*

To build a more vibrant and equitable Stanislaus, it is important that all voices are heard and that residents are informed and empowered to participate in civic life. Stanislaus Community Foundation has committed to multiple new programs in 2021 to achieve the goal of greater civic literacy.

To restore a sense of community, purpose, and shared values, Stanislaus Community Foundation will host quarterly Civic Saturday gatherings in 2021. **Civic Saturdays** are gatherings that provide the opportunity to nurture a shared civic purpose and deepen community bonds by using music, poetry, and readings from American historical literature.

We know that any organization that makes real change is led by diverse staff and board members, including diverse ages. To help develop the next generation of young leaders, Stanislaus Community Foundation is launching **NextGen on Board**. Supported by **Dave and Jeanne Olson**, this new program will recruit, train and place 40 young leaders (ages 18 to 26) on local nonprofit boards over the next two years.

Strong local journalism encourages civic participation and improves local decision-making, but local journalism across the country is in decline. Stanislaus Community Foundation is launching **The McClatchy Media Lab Fund** to bolster community journalism in Stanislaus. In an innovative partnership with the nonprofit Report for America, grants from this fund will expand the team of reporters at The Modesto Bee and support new models for journalism at the local level.

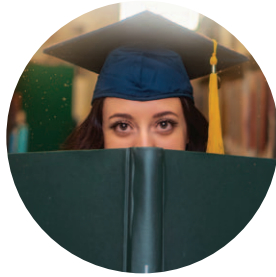
Our team at Stanislaus Community Foundation is committed to new ways of learning in 2021, including engaging in reflective conversations with our partners and listening deeply to residents. This summer, we will host a series of **listening sessions** with grassroots organizations to deepen our understanding of the challenges Stanislaus families face. These listening sessions will inform our leadership work and our guidance to donors.



## *Connecting Donors to Local Causes*

Building from our 2020 State of Stanislaus County's Nonprofit Sector report, Stanislaus Community Foundation will deepen the connections between donors and causes in 2021. We will host a series of small-group meetings on issues of interest to donors. Our **donor briefings** will cover topics such as education, economic opportunity, and youth empowerment and will provide focused information on the causes our donors care about most. We will also launch **GuideStar Local**, a searchable database for donors with real-time information about local nonprofits.

# Our Impact By The NUMBERS



In 2020, Stanislaus Community Foundation managed over **\$43 million in total charitable assets** and distributed more than **\$6 million in grants and scholarships** to the community through our **more than 170 funds** established by generous individuals, families, and corporations.

CHILDREN AND YOUTH  
\$661,600.00

10.52%



COMMUNITY DEVELOPMENT  
\$929,086.79

14.78%



ACADEMIC & EDUCATION  
\$1,048,257.70

16.67%



HEALTH & HUMAN SERVICES  
\$1,148,242.85

18.27%



ARTS, CULTURE & HISTORY  
\$806,292.84

12.83%



SCHOLARSHIPS  
\$417,250.00

6.64%



BASIC NEEDS  
\$979,766.10

15.59%



OTHER  
\$295,908.32

4.71%



# OUR FUNDS



## Agency Funds

American Leadership Forum - Great Valley Chapter  
Center for Human Services  
Central California Art Association  
Central Valley Professional Exchange  
Central West Ballet Fund  
Community Hospice Foundation Fund  
Education Foundation of Stanislaus County  
Friends of the Modesto Salvation Army  
Modesto Band of Stanislaus County  
Modesto Fire Dept. Historical Restoration Fund  
Modesto Firefighters Training Symposium Fund  
Modesto Gateway Rotary Club Foundation Fund  
Modesto Police Foundation  
Modesto Rotary Club Foundation  
Patterson Historical Research Foundation  
Patterson Recreation - Wellness, Sports and Fitness Fund  
Sierra Vista Child & Family Fund  
Sunrise Rotary Foundation Fund  
United Cerebral Palsy Association Fund  
City of Modesto Parks & Recreation

## Corporate Donor Advised Funds

Boyett Petroleum "Make Dreams Real" Fund  
Garton Tractor Family Fund  
Oak Valley Community Bank Fund

## Designated Funds

Brian LoConte Agricultural (Endowment)  
Camp Jack Hazard - "Bart Bennett" Fund (Endowment)  
Camp Jack Hazard - "Robert Babington" Fund (Endowment)  
Donovan & Alberta Bodes Fund  
Friends of the Empire Community Pool  
Imagination Library Turlock- ABC Project  
James McClatchy Local Media Fund  
Lloyd S. & Virginia M. Parks Memorial Fund (Endowment)  
Modesto Bee Economic Mobility Lab  
National Ag Science Center Fund (Endowment)  
Nick Chipponeri Family Fund  
O' B Green O'Brien's Market  
Rotary Centennial Junction Fund  
St. Stanislaus School Scholarship Fund  
William H. Turner & Doris L. Turner Trust  
Youngheim Family Fund

## Donor Advised Funds

Abigail Colby Floyd Memorial Fund  
Amador Family Fund  
Ann M. Veneman Fund  
Augusta Fund  
AUTHENTIC 209 Community Investment Fund  
Back 40 Benefaction  
Bill & Nancy Jackson Family Fund

Bowen & Michelle Cardoza Family Foundation  
Boyett Family Foundation Fund  
Bruce and Grace Valentine Charitable Fund  
Cardoza Bordona Family Fund  
Carroll Family Foundation Fund  
Ciara Chiesa's Circle of Hope  
Clark Family Fund  
Community Transitional Resources CTR  
Data Path Fund  
Dickerson Family Foundation  
Evans Family Fund  
Florence Caruso Family Fund  
Friedman Family Fund  
Gianelli Family Fund  
Greater Modesto Area Churches  
Grover Family Fund  
Gulvin Family Fund  
Gunnarson-Duran Charitable Fund  
Iron Otter Fund  
Jeff and Barbara Quinn Family Fund  
John & Diane Bellizzi Fund  
Johnny Etchebarne's Nugget Fund  
Kayla Bernardi Bee Positive Foundation  
Layman Family Fund  
Martino/Cusenza Family Fund  
Maya Rose Children's Fund  
Michael and Marjorie Zagaris Family Fund  
Nicholson Family Fund  
Olson Family Fund  
Paul & Meika Harmon Family Fund  
Porges Family Foundation  
Raspo Family Fund  
Robert E. Perry Memorial Fund  
Ryan Dziadosz and Layla Kasha Family Fund  
Ryan Michael Barber Memorial Fund  
Siefkin Family Fund  
Strom Family Fund  
The Eric and Carol Benson Charitable Fund  
The InterTwine Group Fund  
The Muratore Family Fund  
The Robert Woolley Fund  
Tony and Linda Miligi Family Fund  
Tony Mistlin Youth Fund  
TREEmendous Goodwill Foundation  
Van Overbeek Family Fund

## Field of Interest Funds

Bee Disadvantaged Youth Fund (Endowment)  
Christopher P. Walker Foundation Fund  
Deputy Dennis Wallace Kids Soccer Fund  
Focus on Prevention  
Memorial Hospital Foundation ROCK Fund  
NOZ Fund  
Stanislaus Health Careers Fund  
The John and Cheri Phillips Fund  
Victoria Higginbotham Fund

## Fiscal Sponsorship Funds

Friends of the Modesto Dog Park  
George A Rogers Neighborhood Park Fund  
Project Resolve  
Ryan Dickerson Fountain Fundraising  
Youth Empowerment Program/Create Our Space Fund

## Scholarship Funds

AAUW Oakdale-Riverbank Escalon(ORE)  
Scholarship Fund  
Alpha Epsilon-Chapter Delta Kappa Gamma  
Educator Scholarship  
Beyer High School Athletic Scholarship Fund  
Chiton Society Scholarship Fund  
Club of Hearts Scholarship Fund  
Don Hendricks Memorial FFA Scholarship  
Evelyn Hanshaw Scholarship Fund  
George A Rogers Neighborhood Park Scholarship Fund  
Latino Business Assoc.  
Mary Grogan Scholarship Fund  
Sammy Jenkins Math Scholarship Fund  
Tuolumne Scholarship Fund  
Amador Family Scholarship Fund  
Arthur T. and Corrine K Shields Scholarship Fund  
Bee Scholarship - McClatchy Family (Endowment)  
Bob Boggeri Farms Fund  
David W. Moore Memorial Scholarship Fund  
Dr. Grant E & Colleen Bare Scholarship  
Dr. Larry Cooke Memorial Scholarship  
Earl Pride Scholarship (Endowment)  
Edward T. Taylor Jr. Perpetual Memorial  
Elizabeth Jane Smyth Memorial Scholarship  
Gemperte Family Farms Scholarship Fund  
Jane Wynne Woolley Memorial Scholarship Fund  
Jim & Betty Lilly Scholarship Fund  
Judy Wiegman Scholarship Fund  
Loving Jags Scholarship Fund  
Maralyn J. Stewart Memorial Scholarship  
Martella Family Scholarship Fund  
Melinda Nielsen Family Scholarship Fund  
Ryan Dickerson Scholarship Fund  
Stanislaus Futures Scholarship Fund  
The First Tee of Central Valley Scholarship Fund  
The Rose Family Scholarship Fund  
Trinitas Farming Community Scholarship Fund  
Zwahlen Family Scholarship Fund

## Unrestricted Funds

Bette Belle & Jean Smith Memorial Fund  
McClatchy Discretionary Fund



## Our Vision

*Stanislaus County is a community of choice where people live, work and thrive.*



## Our Mission

*We nurture partnerships and grow charitable resources to advance the common good in Stanislaus County.*



## Our Values

*We build community through collaboration. We help donors craft impactful charitable legacies. We view our community through a lens of abundance, not scarcity.*

*We cultivate trusted relationships by being a joy to work with. We embrace the diversity of the region through inclusive leadership. We encourage bold thinking to solve systemic problems.*



Stanislaus  
Community  
Foundation

**STANISLAUSCF.ORG | 209.576.1608**